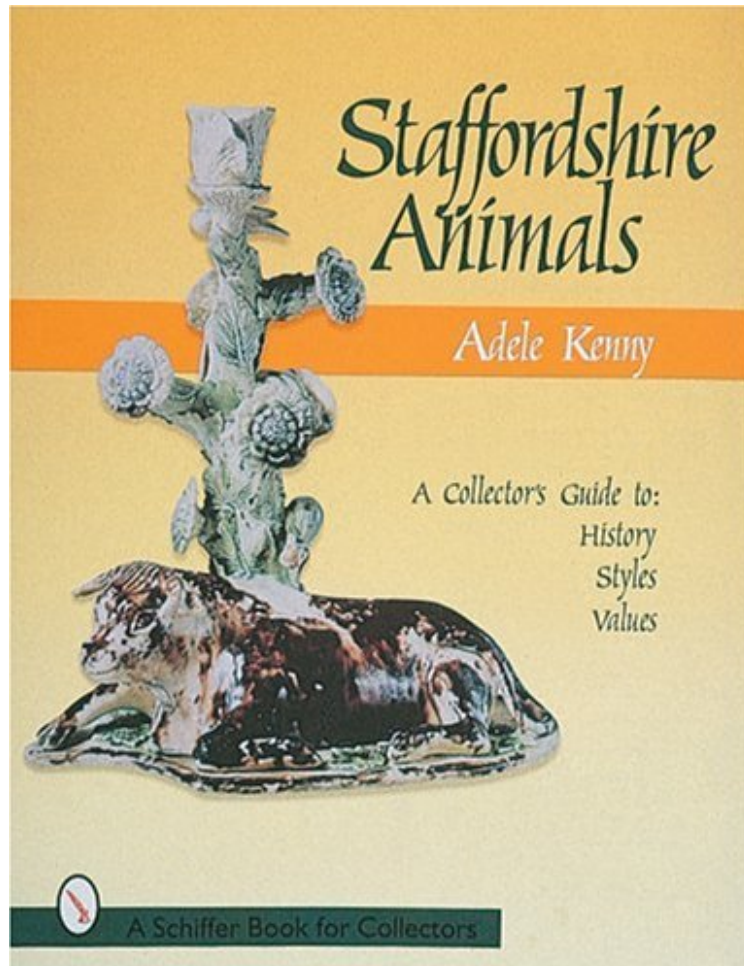


Staffordshire Earthenware Animals: A Collector's Guide to History, Styles, and Values

Adele Kenny

DOC | *audiobook | ebooks | Download PDF | ePub



DOWNLOAD



READ ONLINE

#532814 in Books Schiffer Pub Ltd 1997-12-12 Original language: English PDF # 1 11.00 x .98 x 8.50l, .0
#File Name: 0764304224192 pages | File size: 35.Mb

Adele Kenny : Staffordshire Earthenware Animals: A Collector's Guide to History, Styles, and Values before purchasing it in order to gage whether or not it would be worth my time, and all praised Staffordshire Earthenware Animals: A Collector's Guide to History, Styles, and Values:

0 of 0 people found the following review helpful. Great photos.By TaffyGreat book, with wonderful photos. The prices are, of course out of date, but seemed high even for publication date.0 of 0 people found the following review helpful. Bravo Adele Kenny and Schiffer PublishingBy A CustomerIn words of one syllable, YOU MUST BUY THIS BOOK! As the owner of an antiques business and one who sells Staffordshire figures, I endorse this book without reservation. Narrowing the subject to one category of Staffordshire collecting and an in-depth study makes this reference text as unique as Adele Kenny's other books and numerous articles that have been published in widely

circulated periodicals like *The Antiques News*, *Antiques Auction News*, and *Carter's Antiques Collectables* (Australia). This is MUCH more than the usual Staffordshire picture book (although the hundreds of illustrations are marvelous). The presentation is wonderful, the book design and quality are superior, and the content is without equal. *Staffordshire Animals* is destined to become a standard reference in the field. 4 of 6 people found the following review helpful. For *Lovers of Staffordshire: YOU NEED THIS BOOK!* By A Customer This specialized and comprehensive reference book is a must-have for collectors and dealers! Unlike those large and unwieldy "catalogs" of little more than picture after picture, Kenny has included interesting and informative text that provides invaluable insights into pottery making in Staffordshire as well as a substantial sampling of illustrations. Suggested values give an accurate sense of current, and rising, market. Kenny's book is well-organized and beautifully presented. Her writing style is intelligent, lively, and very reader-friendly. If you love Staffordshire figures, you'll love this book!

This comprehensive new reference focuses on the variety of animal figures produced in Staffordshire during the eighteenth and nineteenth centuries. Characterized by a cottage industry quaintness, Staffordshire figures were known as "image toys" and "chimney ornaments" in their day. Countless subjects were produced but the animal models comprise a Noah's Ark of some of the most charming and endearing figures. Today, Staffordshire animals are among the bestselling and most widely collected antique ceramics. Beautifully illustrated with over 400 color photographs, this book traces animal figure evolution through chapters on animals in art, British ceramics, Staffordshire potters and potteries, and production techniques and styles. Informative captions provide descriptions, dates of manufacture, and current values.

About the Author Adele Kenny is an experienced specialist collector whose ancestors lived in Staffordshire and worked in the potteries. She is the author of *Staffordshire Spaniels: A Collector's Guide to History, Styles, and Values*, also available from Schiffer Publishing. She is the author of 23 books (poetry nonfiction). Her poems, reviews, and articles have been published in journals worldwide, and her poems have appeared in books and anthologies published by Crown, Tuttle, Shambhala, and McGraw-Hill. She is the recipient of numerous awards for her poetry, including two fellowships from the New Jersey State Council on the Arts, a first place Merit Book Award, a Thomas Merton Poetry of the Sacred Award, and a Writer's Digest Poetry Award. A former professor of creative writing in the College of New Rochelle's Graduate School, she is the founding director of the Carriage House Poetry Series and poetry editor of *Tiferet*. Website: adelekenny.com/Poetry Blog: adelekenny.blogspot.com/